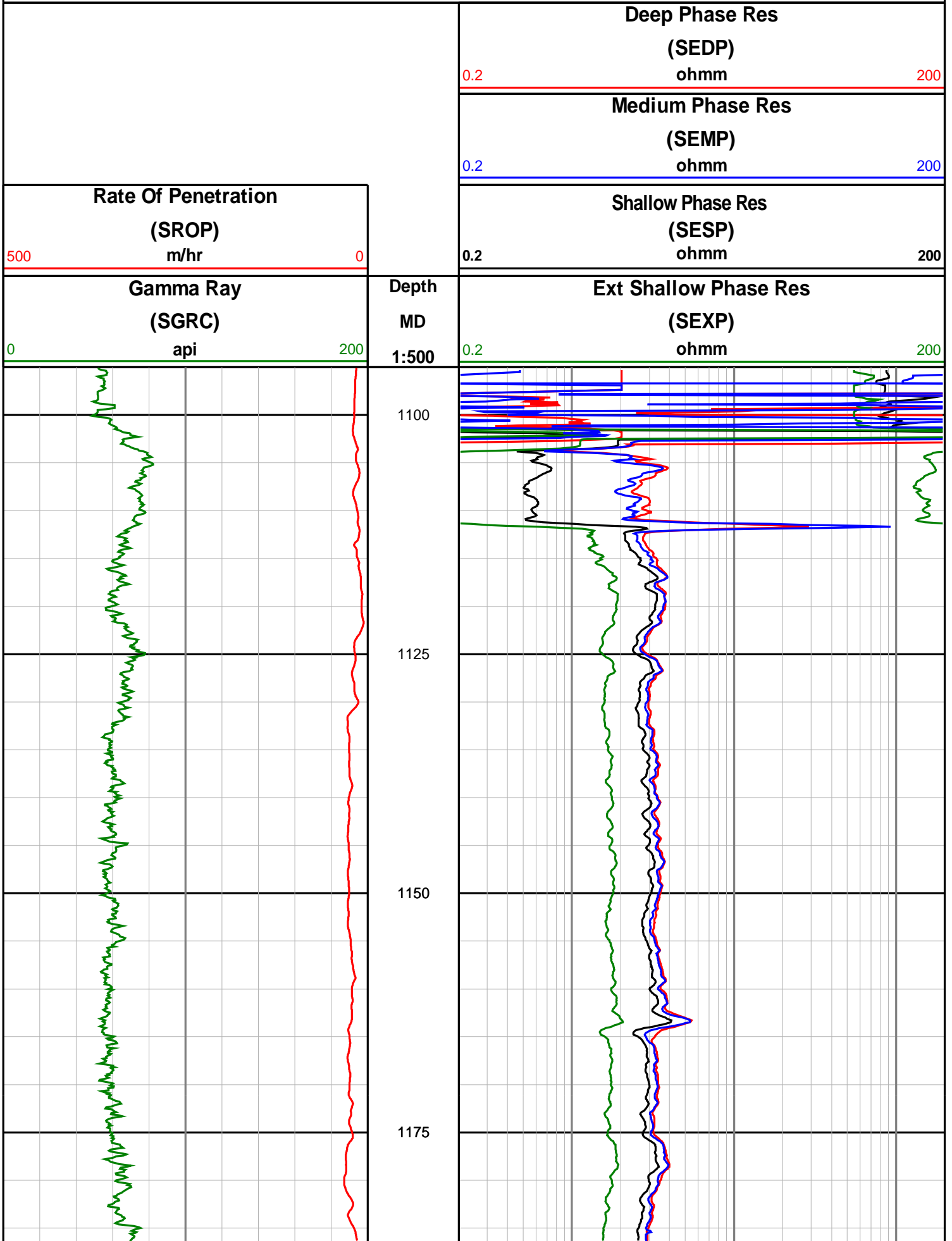
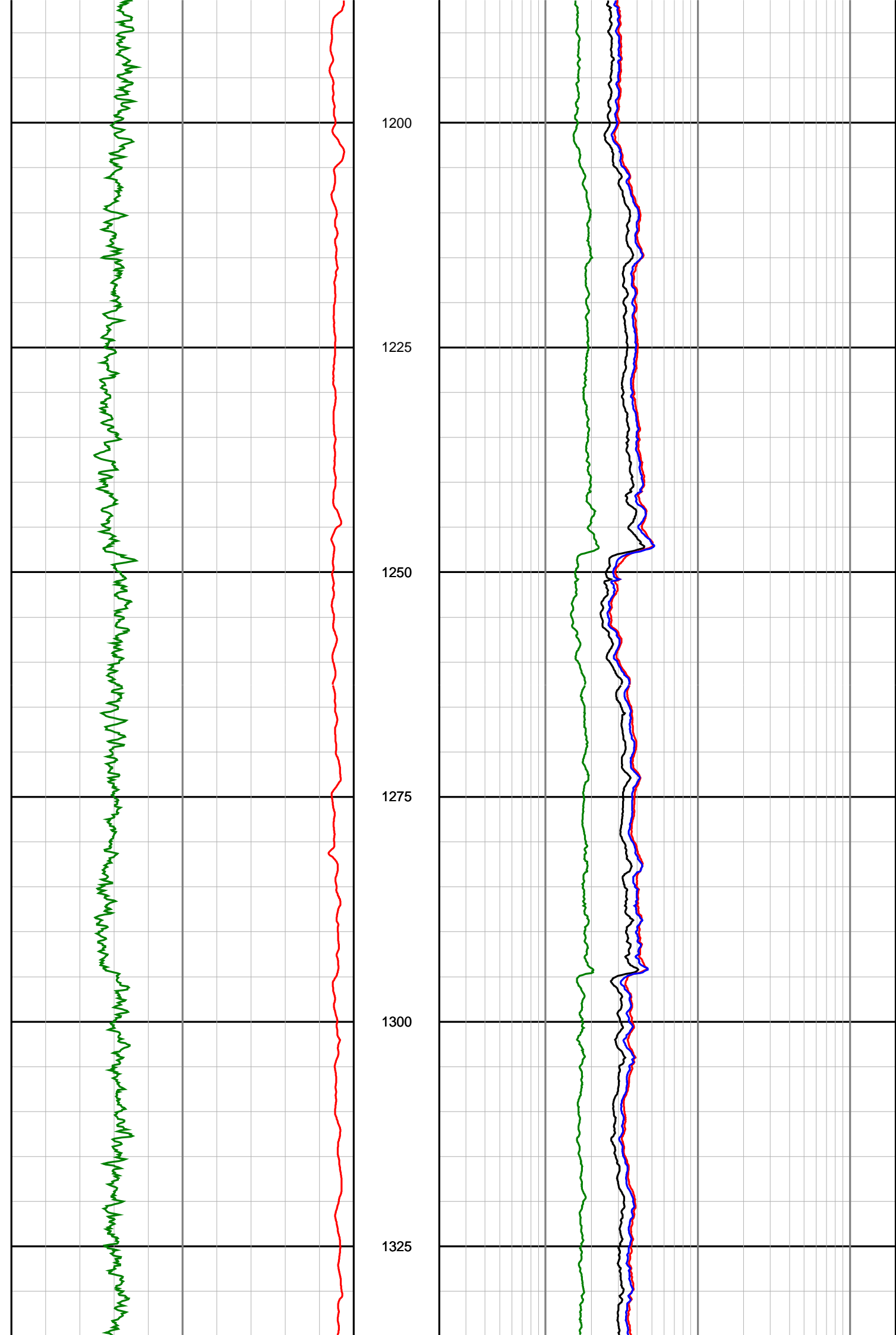


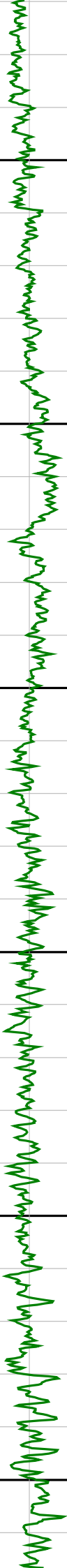
# Anzon Australia Ltd

## Basker-3

Recorded/Realtime LWD Log (Permanent Datum - LAT)







1350

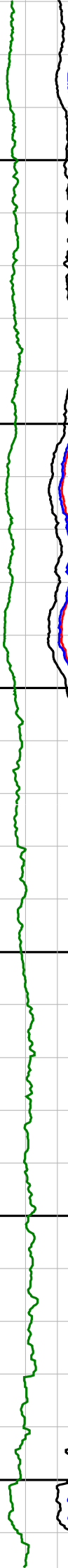
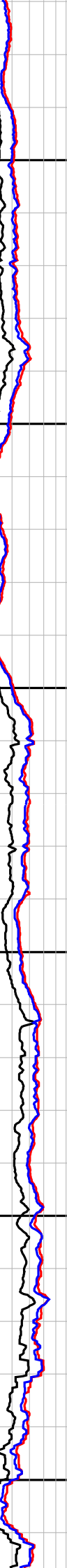
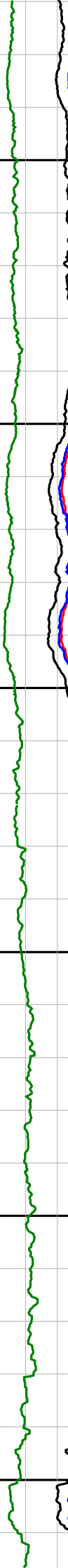
1375

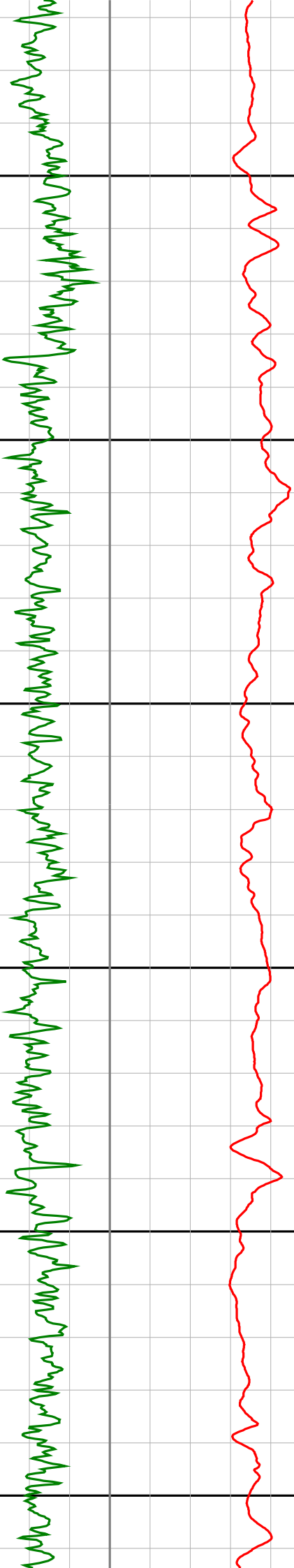
1400

1425

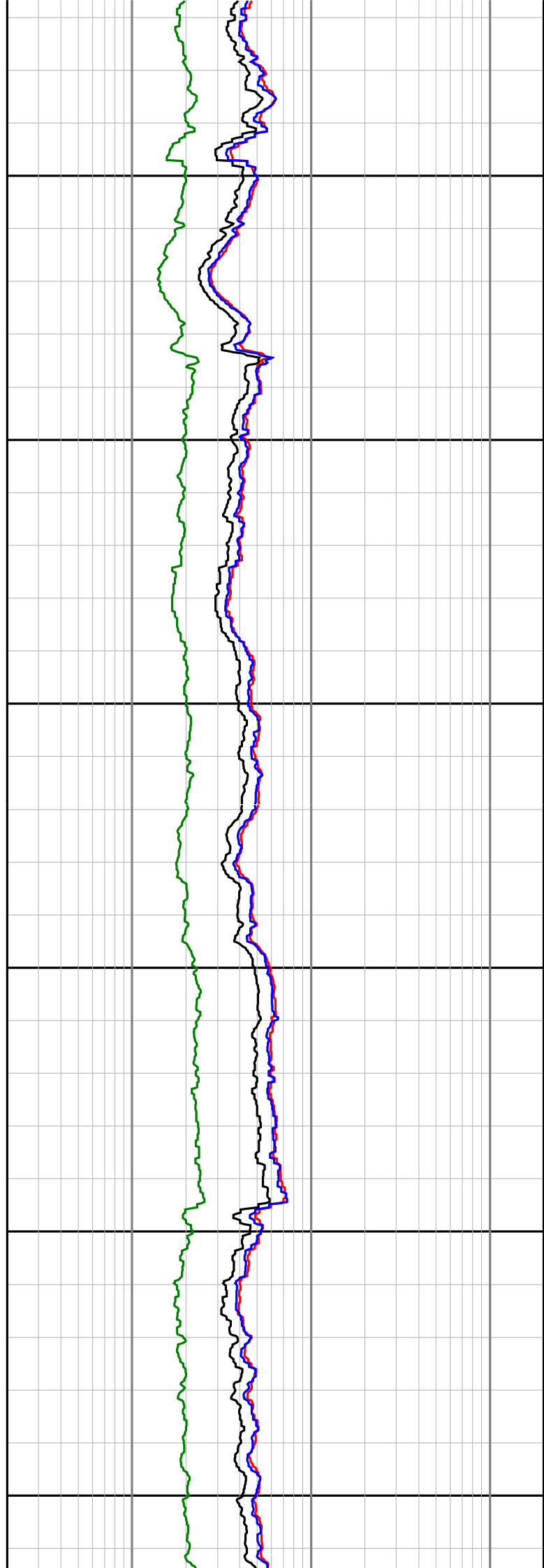
1450

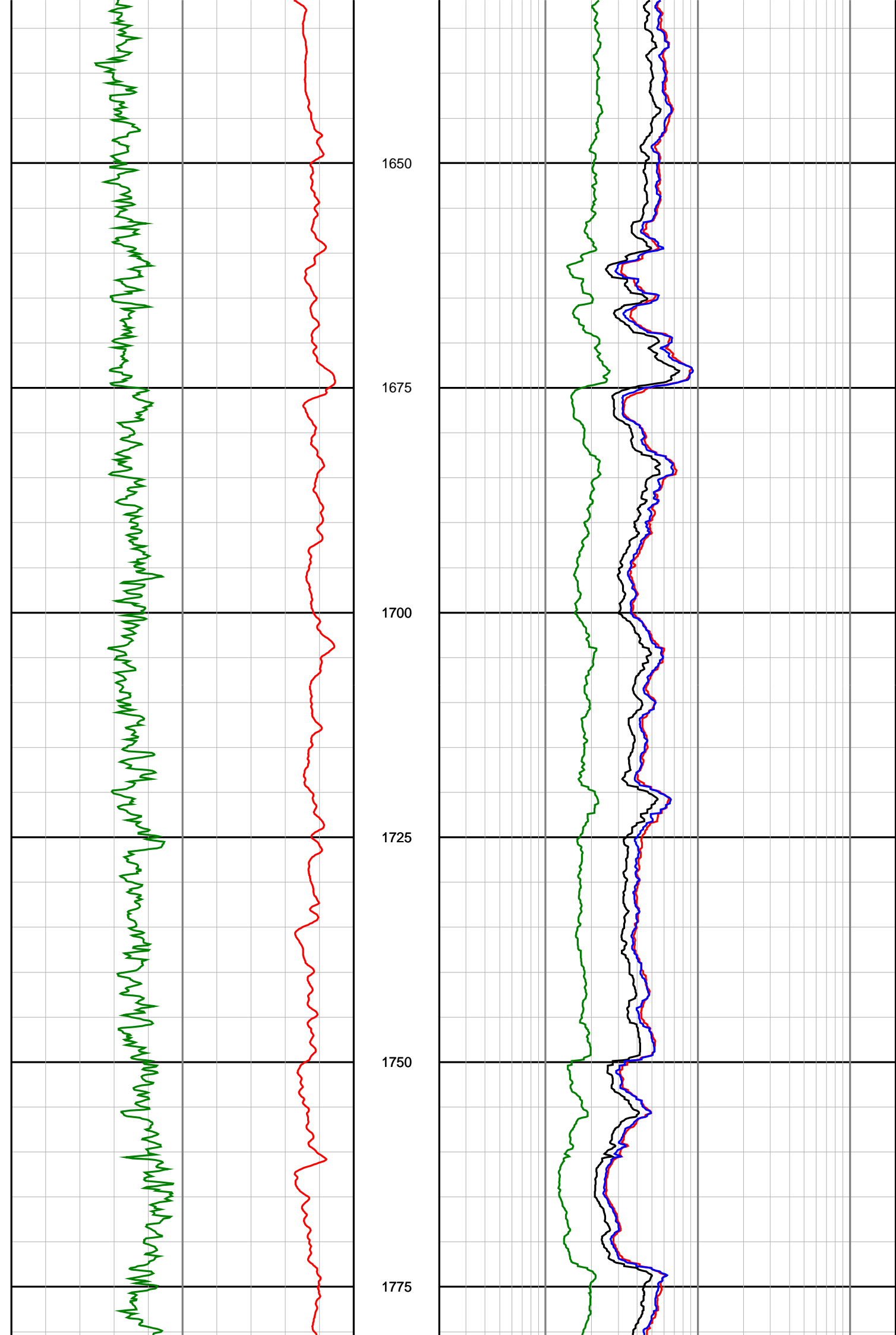
1475

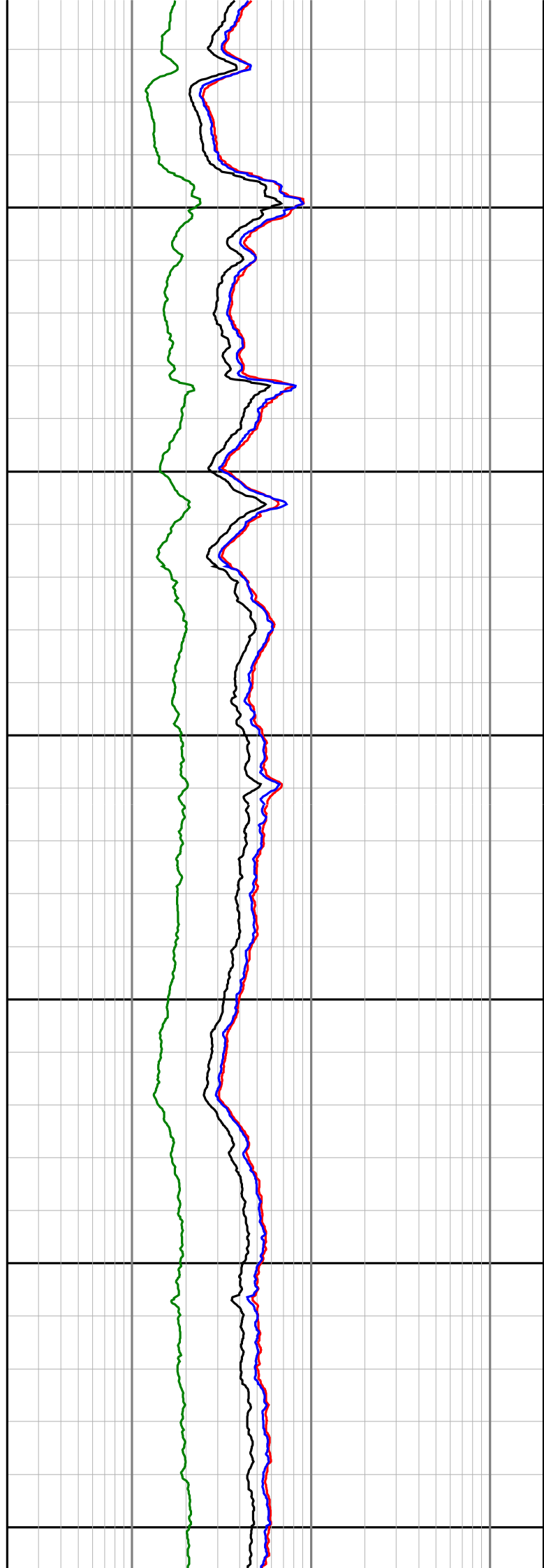
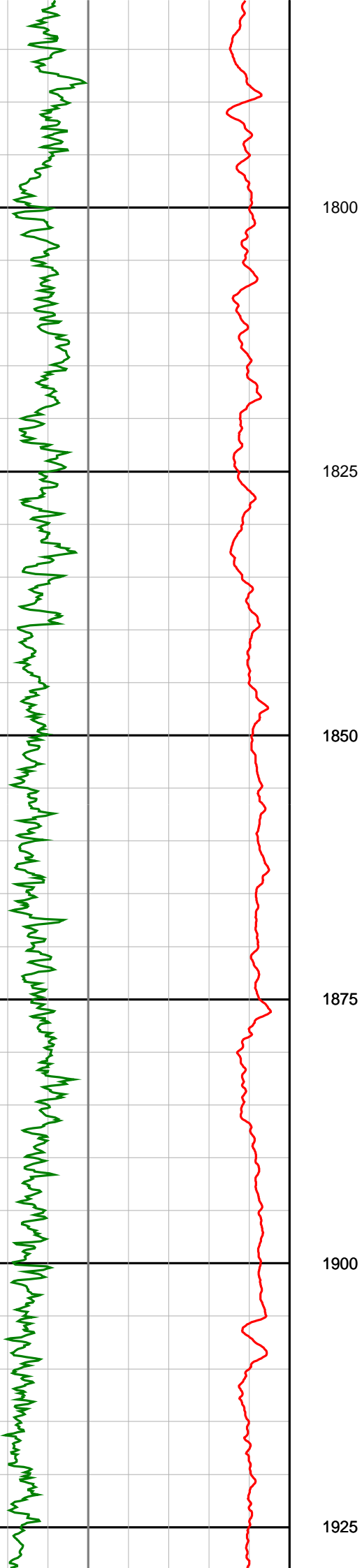


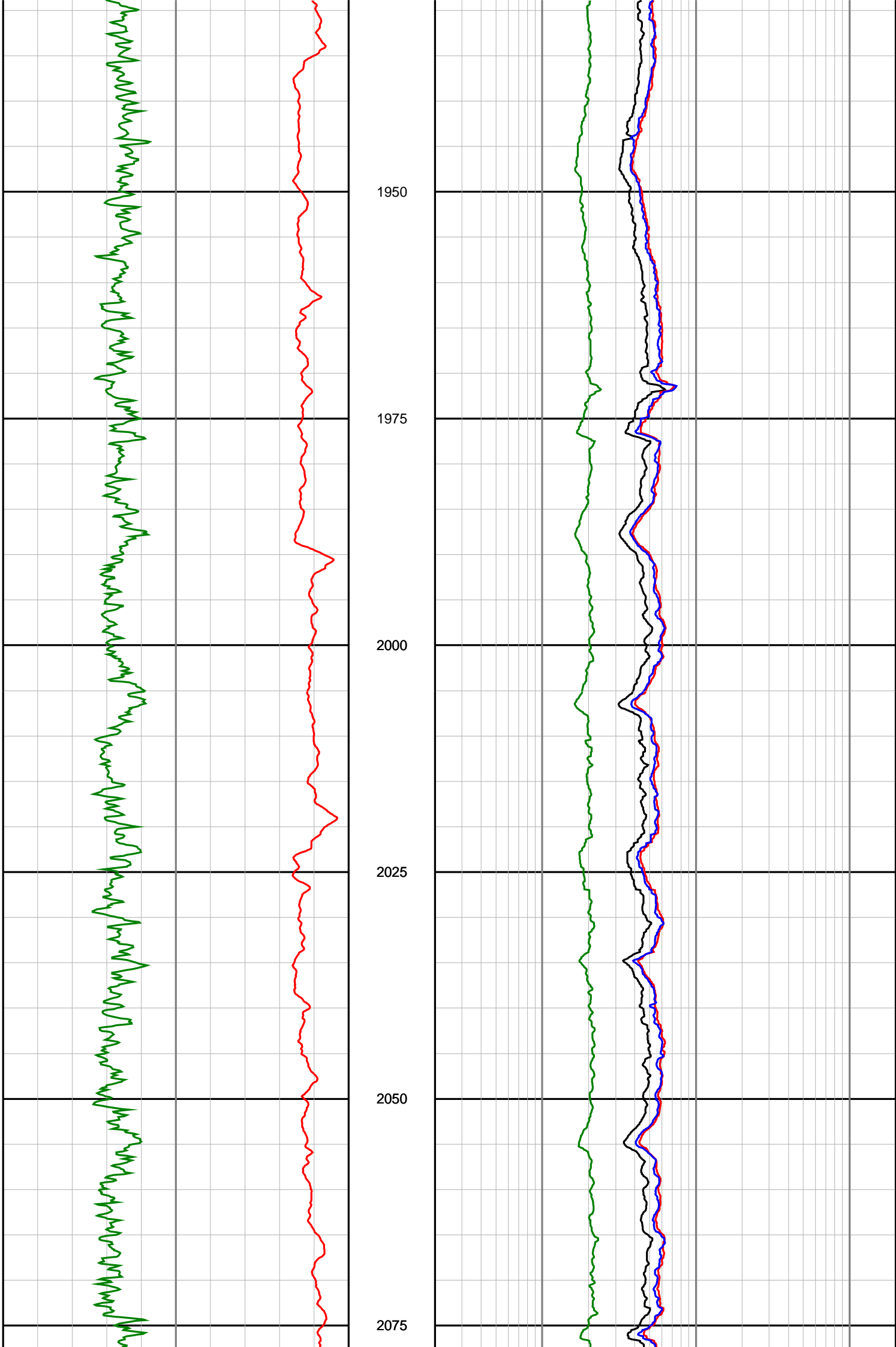


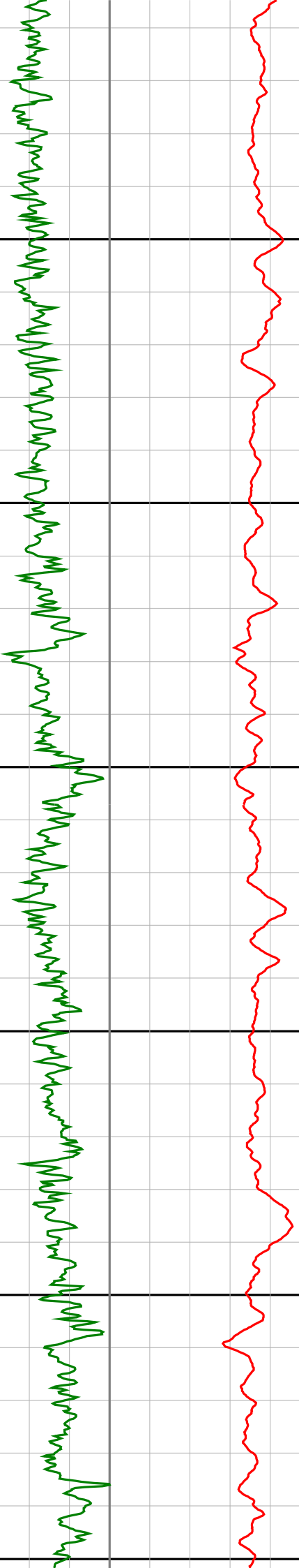
1500  
1525  
1550  
1575  
1600  
1625











2100

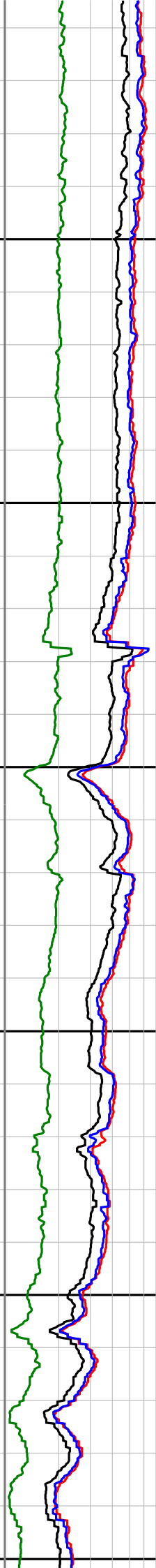
2125

2150

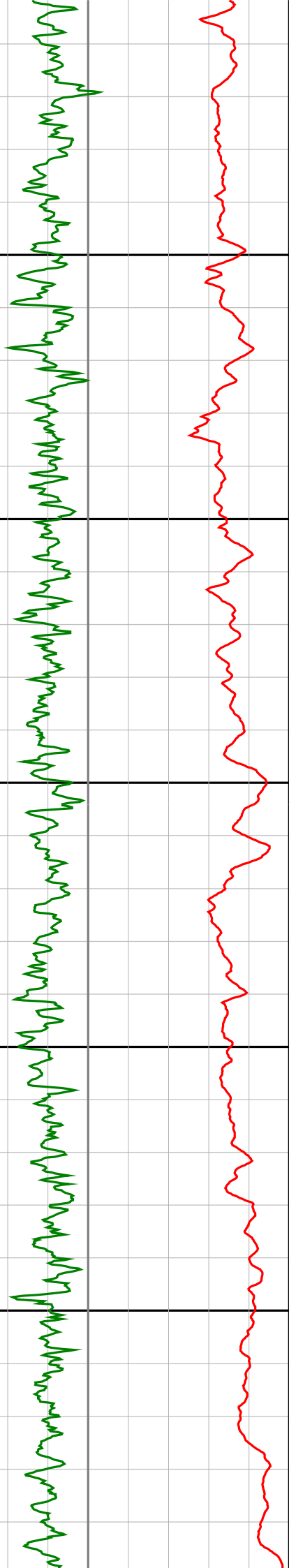
2175

2200

2225







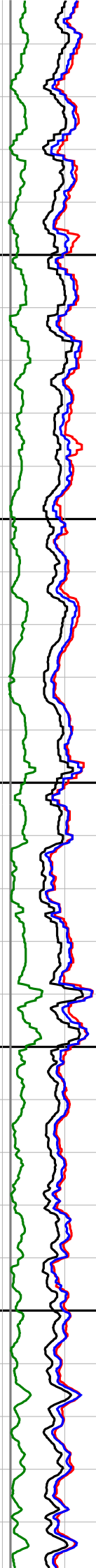
2250

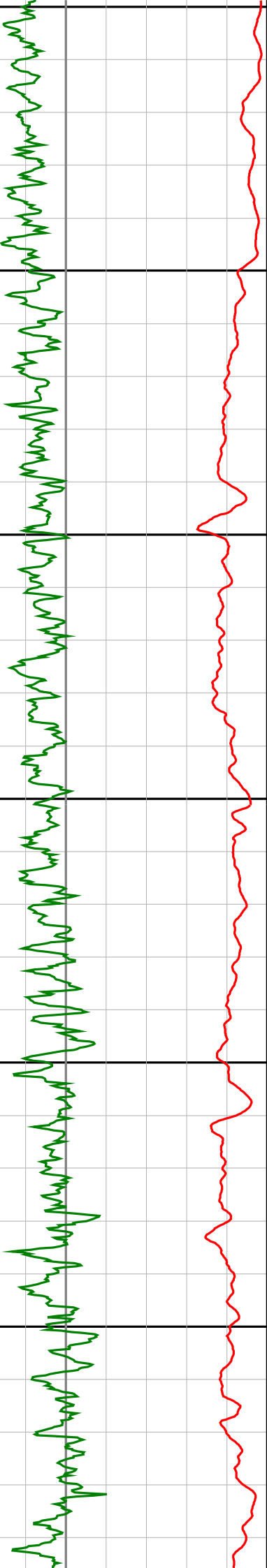
2275

2300

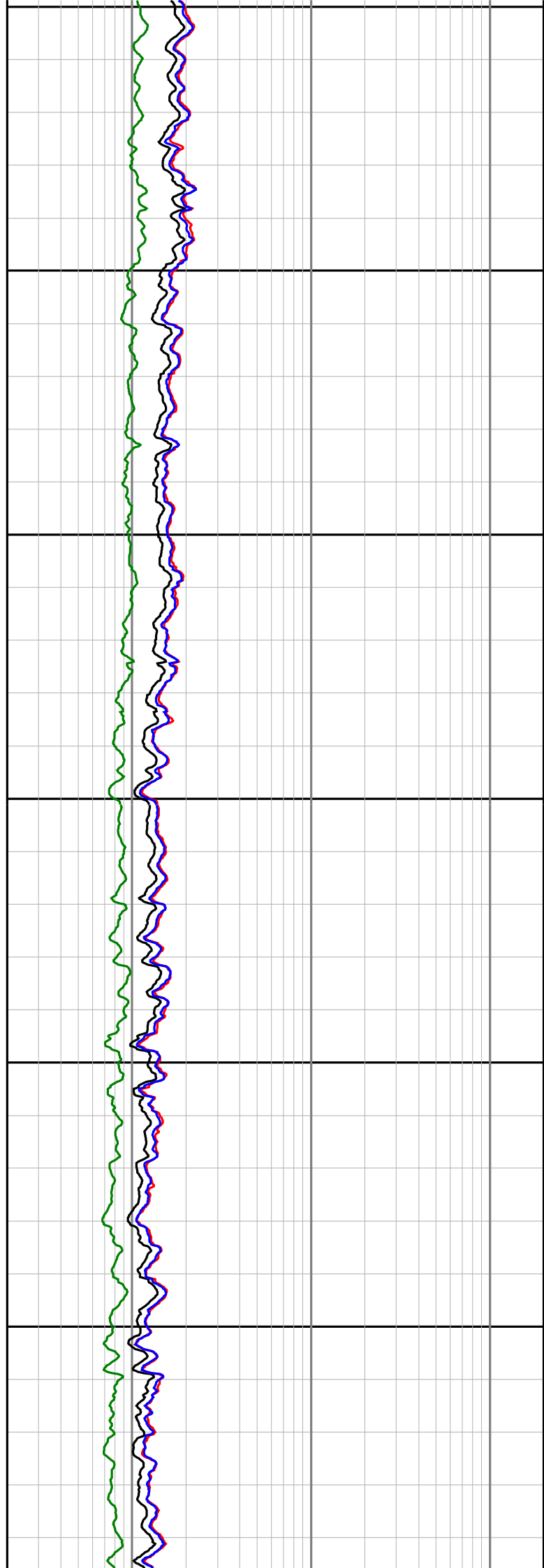
2325

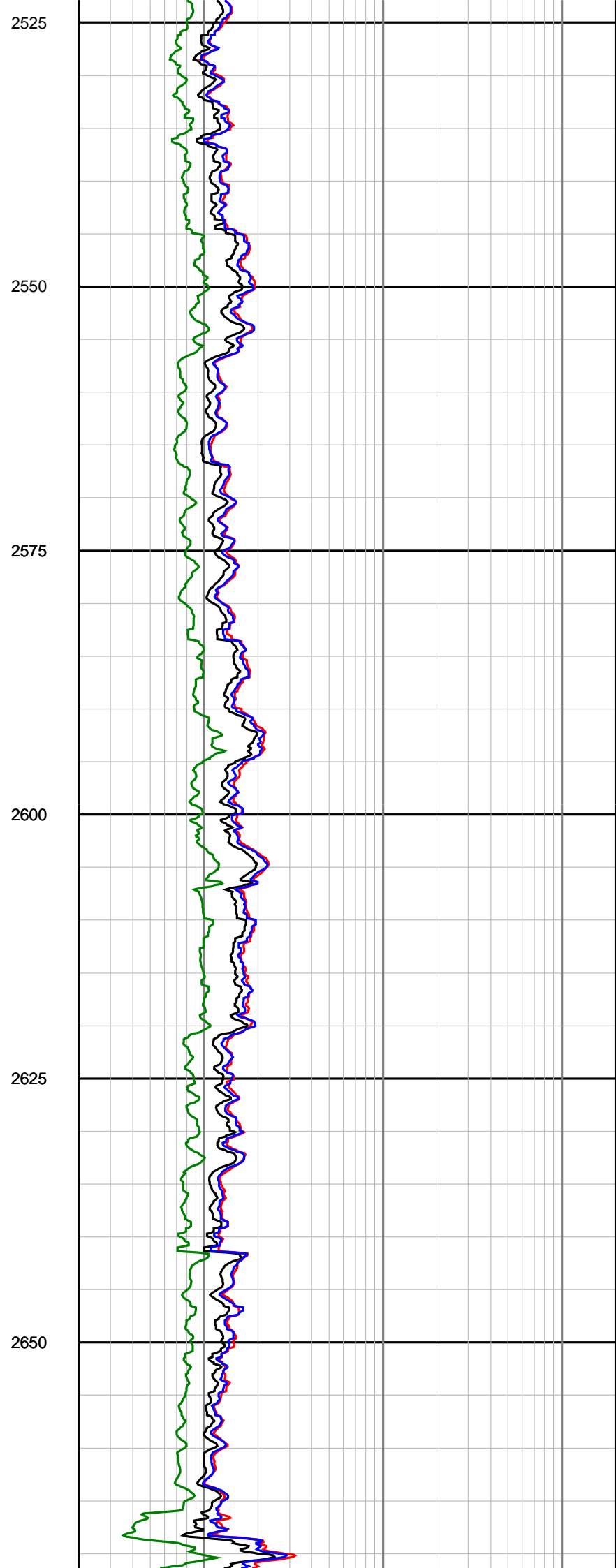
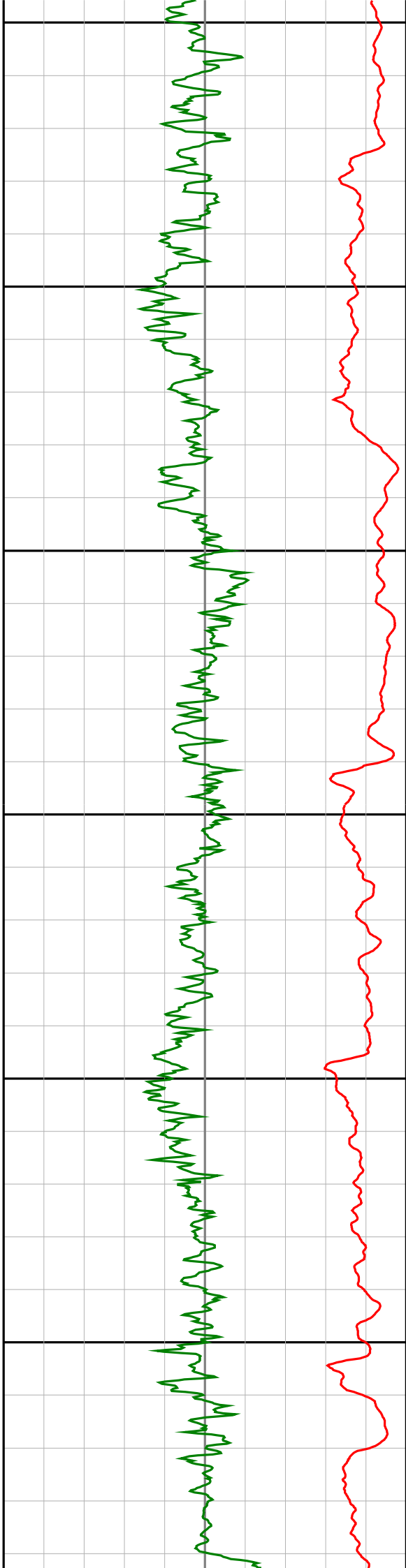
2350

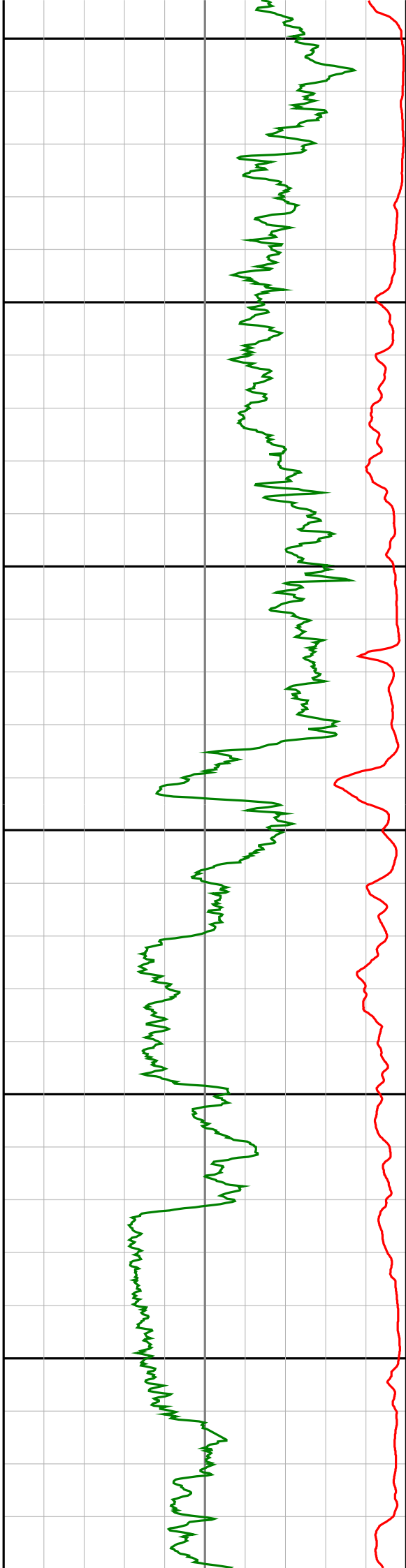




2375  
2400  
2425  
2450  
2475  
2500







2675

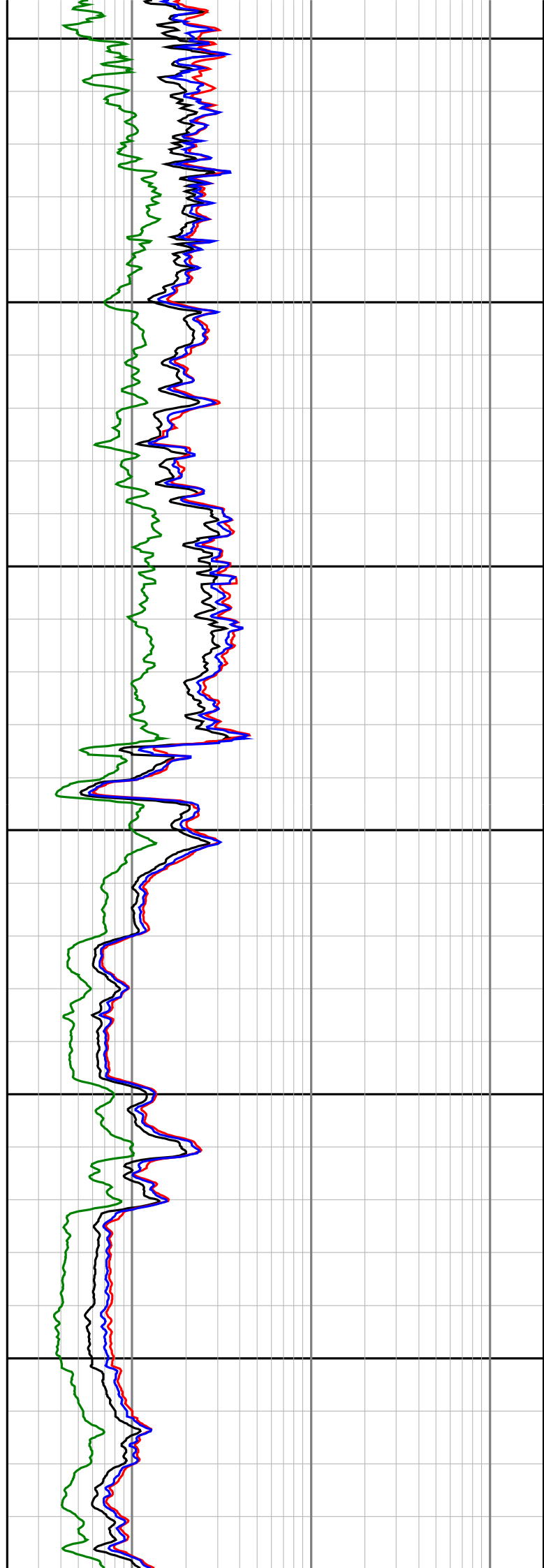
2700

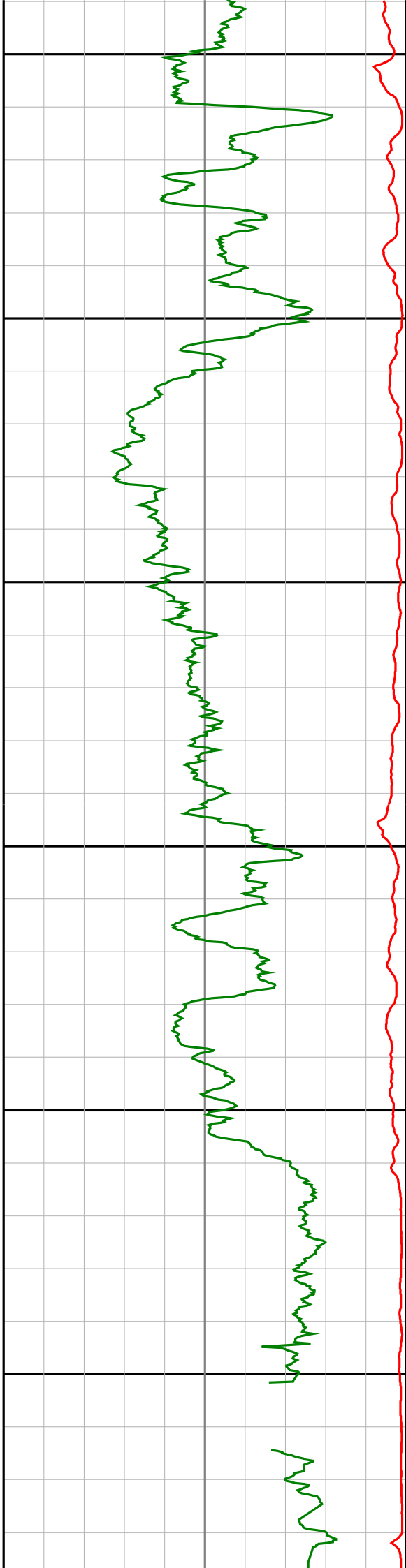
2725

2750

2775

2800





2825

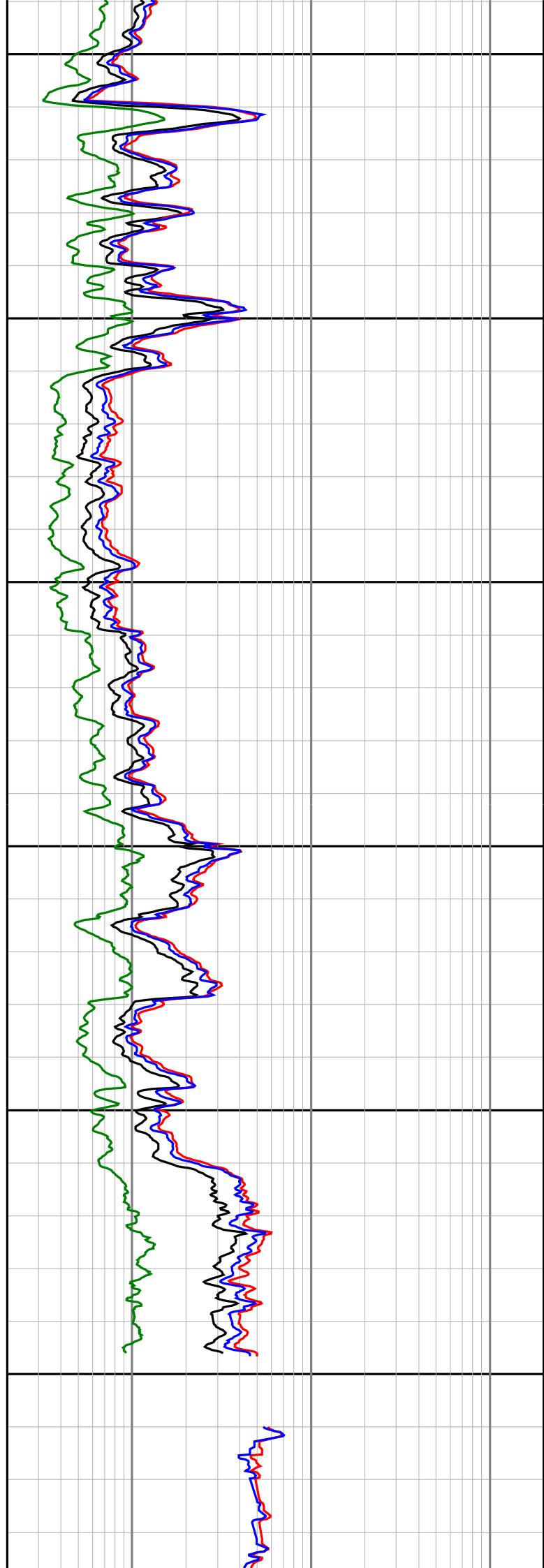
2850

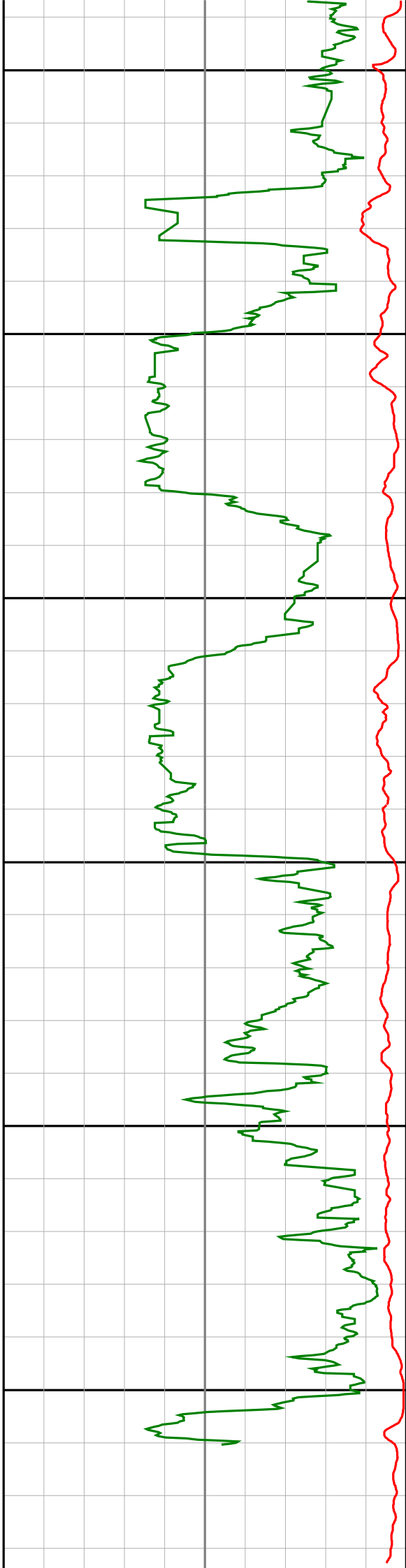
2875

2900

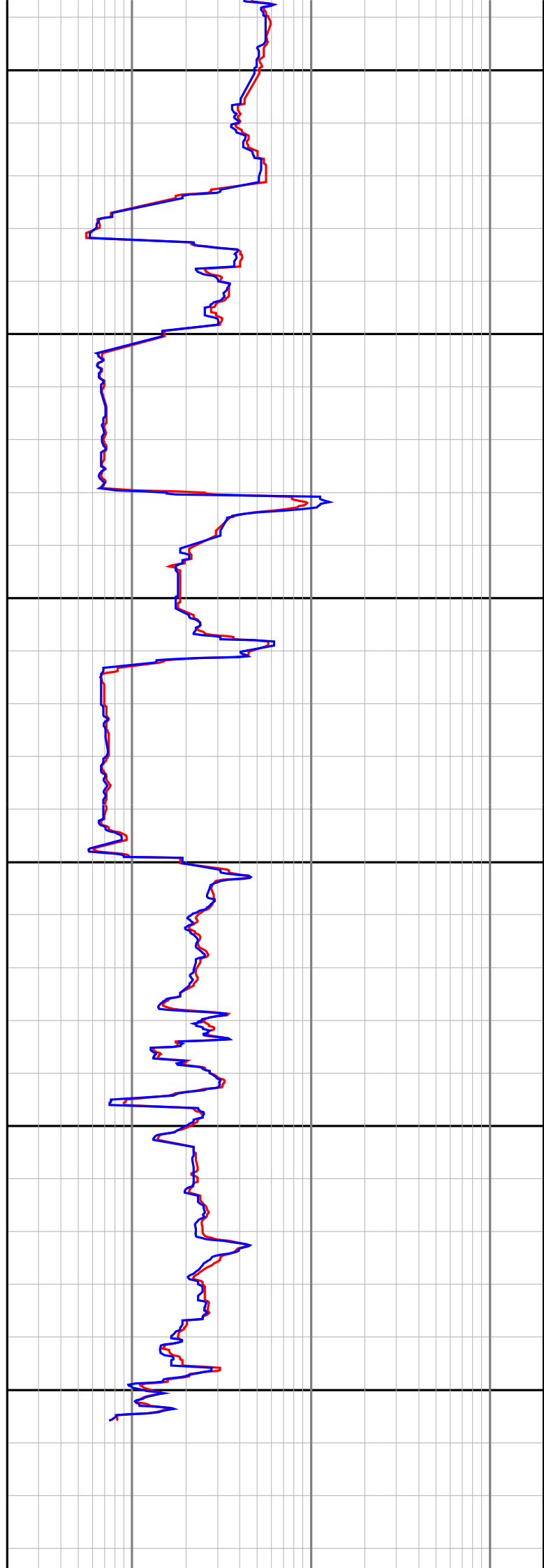
2925

2950





2975  
3000  
3025  
3050  
3075  
3100



<p align="center"><b>Gamma Ray (SGRC)</b> api</p> <p>0 <span style="float:right">200</span></p>	<p align="center"><b>Depth MD 1:500</b></p>	<p align="center"><b>Ext Shallow Phase Res (SEXP)</b> ohmm</p> <p>0.2 <span style="float:right">200</span></p>
<p align="center"><b>Rate Of Penetration (SROP)</b> m/hr</p> <p>500 <span style="float:right">0</span></p>		<p align="center"><b>Shallow Phase Res (SESP)</b> ohmm</p> <p>0.2 <span style="float:right">200</span></p>
		<p align="center"><b>Medium Phase Res (SEMP)</b> ohmm</p> <p>0.2 <span style="float:right">200</span></p>
		<p align="center"><b>Deep Phase Res (SEDP)</b> ohmm</p> <p>0.2 <span style="float:right">200</span></p>